

by architect gihan muthugala and nilooshi eleperuma
of iconcast chartered architects
photographs madushan indika de silva of mad factory



dwelling re:formed

A single family house (built in the 80's) in a partial state of abandonment is acquired by new owners, who demand a fresh functionality and aesthetic for their family's soon-to-be new home. The brief was to create open plan spaces with improved relationships to the garden, and a kitchen that could be enjoyed as a social space. Located in Moratuwa, this renovated home is simultaneously sophisticated and cozy; offering a homely retreat with contemporary comfort. The design intent was to capture the translucent and independent spirit and way of life of the dwellers modifying the existing house to form a designed built space and landscape. The original house accommodated a family of four and a maid; the new configuration needed to contain a family of five, a guest area, and covered parking for two vehicles. The challenge posed by the reconstruction and rehabilitation of the house is the integration of a new area in the existing footprint, maintaining a generous garden space.

It can be difficult to merge the different architectural concepts of the 1980s enclosure and contemporary disclosures without resulting in an incongruent aesthetic. In this case the architects managed to do exactly that, by reinventing the built form with a light-weight expansion. The new additions to the existing reinforced concrete structure grew from the grid of the original structure and were of structural steel, glass and timber fenestration; with the intension of differentiating the new from the old part of the house by the visual weight of materials; achieving a good dialogue between both.

A new layout and form

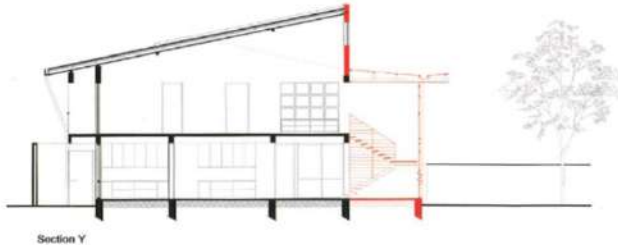
The transformation of this house saw the living area expanded. The layout and form were adjusted to make the space more open plan and social, making the garden an extension of the living space for entertaining friends and family.

As one arrives at the compound, the full depth and width of the site is in view with the paving and vegetation stretching the view to the perimeter. The external expression of the form is derived from the geometry of volumes in the extended façade and roof.

Based on the concept of living in a garden and gathering under a roof, the most prom-



The reformed dwelling stands in stunning contrast to the built form previously occupying the premises; nestled in its designed landscape



This renovated house is a blend of old and new, offering a cozy retreat with contemporary comfort.



The new balcony steel and timber staircase offers transparency, increasing reach of light and the entry of natural light into the living.



PROJECT DETAILS

PRINCIPLE ARCHITECTS:
Gihan Muthugala and Niloshi Eleruma

LAND EXTENT:
8,800 sq. ft.

BUILT AREA:
5,400 sq. ft.

LOCATION:
Rawathawatte, Moratuwa

CLIENTS:
Shaminda and Lanka Peiris

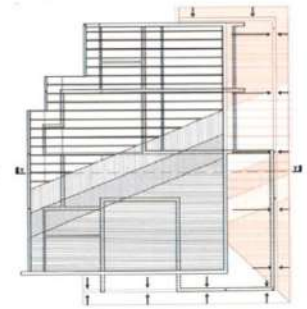
PROJECT COST:
Rs42 million

PROJECT COMPLETION:
December 2017

The house actively prioritizes permeability mindful of its impact on the character of space



First Floor Plan



Roof Plan



The open-plan kitchen located adjacent to the dining and the ample kitchen island allow for unobstructed circulation and space for friends and family to gather around to enjoy meals.

inent modification is in the addition of a glass envelope along the pre-existing grids of the structure where the height is doubled. This projection of the existing house favors the reading of spatial continuity from old to new, and from the interior to the exterior. The plan here was to design a space to provide a specific and distinctive external living experience indoors.

The demolition work included removal of a bulky concrete staircase and peripheral walls on both floors, at locations isolating the interior from the garden. The new bespoke steel and timber staircase offers transparency, increasing depth of space and the entry of natural light into the living, redefining the character space and appropriation of it.

The open-plan kitchen located adjacent to the dining and the ample kitchen island allow for unobstructed circulation and space for friends and family to gather around to enjoy meals. Smaller scale rooms have been added at the rear of the site, for kitchen, laundry and maid's areas.

Abundant Openings

The house actively prioritizes permeability mindful of its impact on the character of space. Particular care was taken in the way fenestration is integrated with the new constructed volume; a timber screen provides visual relief, friendlier than the opaque masonry walls of the old struc-

Particular care was taken in the way fenestration is integrated with the new constructed volume; a timber screen provides visual relief.



The layout and form were adjusted to make the space more open plan and social, making the garden an extension of the living space.



ture; timber in its natural finish mediates more delicately between public and private space.

The simple but significant glass and timber façade framed by a sleek steel structure, rendered in black, wraps the extended corner of the house offering a contemporary feel on the exterior. The facade takes advantage of the views and the sunlight; timber screens and blinds lining the east face of the glassing ensure an abundance of natural light to flood the interior, forming shadow patterns that enliven the space throughout the day.

Inside - Outside:

The dining opens out to a timber deck forming a spill over space for outdoor entertainment. All interior spaces are open to green trees with large openings. A neutral palette offers prominence to vegetation to create a seamless and airy living space.

The bedrooms and bathrooms, the more intimate spaces of the home needing better privacy, are contained in a solid block in contrast with the translucent screen, while the living, dining and kitchen social areas are open and exposed to the exterior.

The reformed dwelling stands in stunning contrast to the built form previously occupying the premises; nestled in its designed landscape. **O**